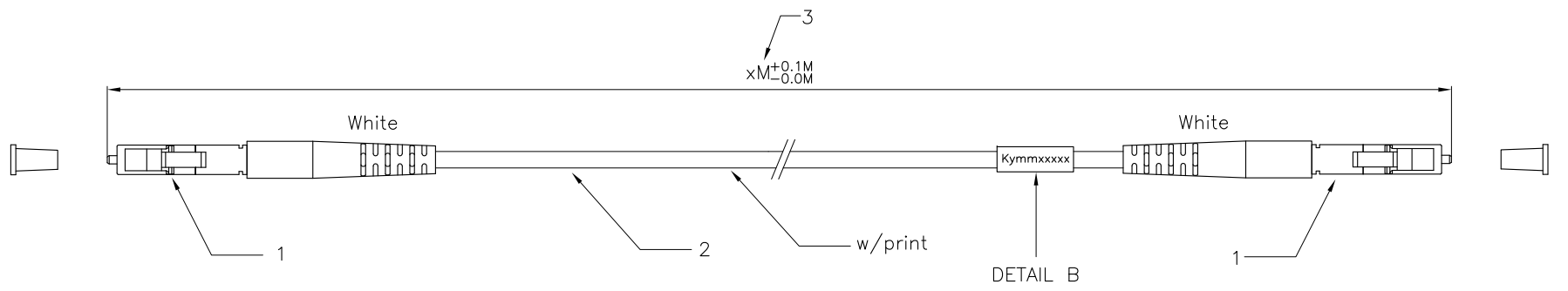


1 2 3 4 5 6

A

A



B


B

Description 1

**ACT** Fiber Optical Patch Cord

LC/UPC to LC/UPC Simplex Singlemode 9/125,OS2

**Model: xxxx-xxxxxx**  
**HC-code: xxxxx**

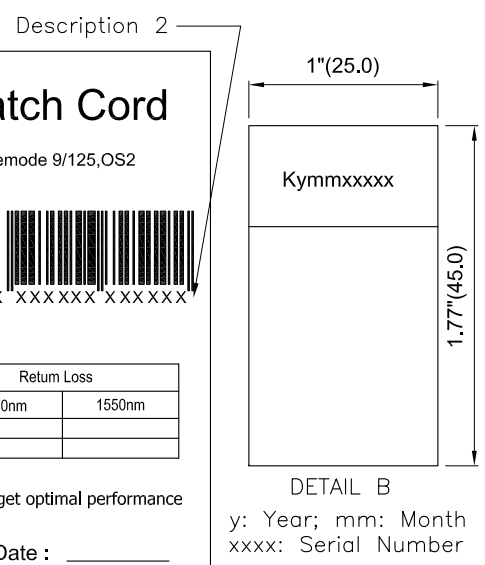
PO/NO.  x'xxxxxx'xxxxxx

Performance:(@23°C)A=1310/1550±20nm

Serial No.	Insertion Loss		Return Loss	
	1310nm	1550nm	1310nm	1550nm
Kymmxxxx	A			
	B			

-ACT advices to clean connector ferrule before usage to get optimal performance  
-Always leave the dust caps on if the cable isn't installed

Prepared By :     QC     Date :           



Specification:

1. LC Connector : LC/UPC Singlemode

Mode	Ferrule	Housing	Boot	Cap
SM Low Loss	Zirconia(ø1.25mm)	Blue(PC)	White(TPE)	White(PE)

2-1. Cable Type : Simplex

Category	Jacket O.D.	Jacket Material	Color
G.657A2(9/125um)	ø2.0mm	LSZH	Yellow

2-2. Cable Text Printing : ACT Premium Singlemode Fiber Optic Patch Cable 9/125um OS2 LSZH MM/YY xxxxM

3. Length : xM

Performance:

- a. Insertion Loss : Singlemode Average<0.10 dB, Max.<0.2 dB
- b. Return Loss : Singlemode UPC>55 dB
- c. Insertion Loss will be Increased after 500 mating : 0.2 dB Max
- d. Operating Temperature : -20°C to +70°C
- f. Storage Temperature : -40°C to +80°C

C

C

RL9993	3000mm	LC/LC 9/125 SIMPLEX, 3m
RL9992	2000mm	LC/LC 9/125 SIMPLEX, 2m
RL9999	1500mm	LC/LC 9/125 SIMPLEX, 1.5m
RL9991	1000mm	LC/LC 9/125 SIMPLEX, 1m
RL9990	500mm	LC/LC 9/125 SIMPLEX, 0.5m
Part NO.	L	Description

D

D

"#": Matching DIM. "*": Important DIM. Others General DIM.  GENERAL TOLERANCE OF DIMENSIONS X.XXX ±0.005 X.XX ±0.05 X.X ±0.1	DRAWING	27.JUN.2019	YMN	<b>ACT</b>	
	CHECK	27.JUN.2019	DAY		
	APPROVAL	27.JUN.2019	FRANK		
	DATE	NAME	ITEM NO.: RL999X		
	SCALE	1/1 (A4)	UNIT	mm	DES.: LC-LC 9/125 Simplex OS2 2.0mm LSZH
	DRAWING NO. LC-LC 9/125 Simplex OS2 2.0mm LSZH(S04)		DRAWING CLASSIFICATION		S SHEET 1 OF 1

1 2 3 4 5 6

0 10cm