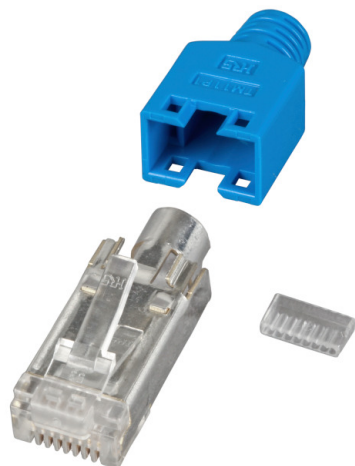


# DATASHEET

## RJ45 Hirose Connector Set STP, TM11 Cat.5e blue





### Description

Up to 100 MHz (Cat.5e)  
 For stranded wires (AWG 24/7, AWG 26/7, AWG 27/7)  
 Shielded version  
 Core insulation about 0.9 - 1.0 mm  
 Cable diameter max. 5.8 mm  
 The set consists of RJ plug, anti-kink sleeve and guide plate  
 Suitable crimping tool DCW1002 + DCW1002.1 or 39934.2

### General data

Category	5E
Model	jack (jack)
Connection type	crimp
Type of connector	RJ45 8(8)
Screened	True
AWG-range for litz wire conductor	24 - 27
Special tool necessary	True
Suitable for round cable	True
Suitable for flat cable	False
Suitable for litz wire conductor	True
Suitable for solid core	False

### Available variants

Article no.	Title	Colour
H7540.7-1	RJ45-Hirose TM11 blue 1 pcs.	blue
H7540.7-10	RJ45-Hirose TM11 blue 10 pcs.	blue
H7540.7-50	RJ45-Hirose TM11 blue 50 pcs.	blue

This datasheet was created automatically on 18-11-2020 . Technical changes reserved.



# DATASHEET

## RJ45 Hirose Connector Set STP, TM11 Cat.5e blue

H7540.7-100

RJ45-Hirose TM11 blue 100 pcs.

blue

### accessory

37541.P

Hirose TM11 Guide plate

This datasheet was created automatically on 18-11-2020 . Technical changes reserved.



EFB-Elektronik GmbH  
Striegauer Straße 1  
33719 Bielefeld

fon: +49 521 40 41 8-0  
fax: +49 521 40 41 8-50

info@efb-elektronik.de  
www.efb-elektronik.de

WIR SORGEN FÜR VERBINDUNG  
WE CARE FOR CONNECTION

