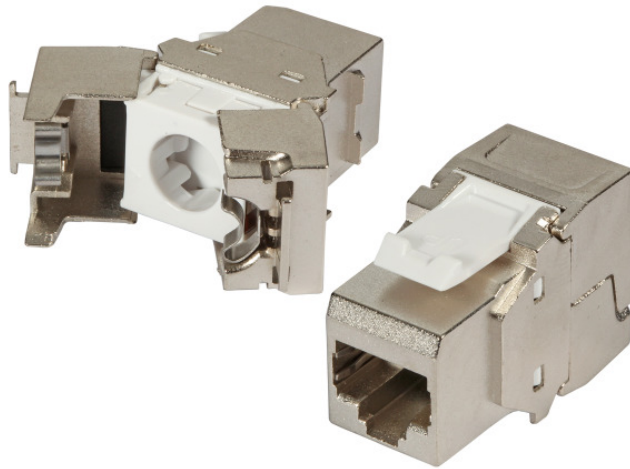


RJ45 Keystone STP, Cat.6, 250MHz



Description

The RJ45 keystone module provides a combination of excellent transmission qualities and an easy tool-free assembly. The high quality of the keystone module ensures very good qualities for 5 Gigabit Ethernet applications. No special tools are needed for the assembly. The assembly is easy and handy to execute. With the RJ45 keystone module you receive a fully shielded module, which will provide good service for a long time in your network installation.

Specifications:

Compact cable presorter for AWG 24/1 .. AWG 22/1 and AWG26/7 .. AWG24/7
Pair management according to TIA 568A /B colour codes
Appropriate for all distribution panels and frames with keystone slots

Scope of delivery:

1 x RJ45 keystone, 1 x copper foil, 1 x cable tie, dust cover, mounting instruction

General data

Category	6
Model	jack (jack)
Connection type	IDC
Type of connector	RJ45 8(8)
Screened	yes
AWG-range for litz wire conductor	26 - 24
AWG-range for solid core	24 - 22
Special tool necessary	No
Suitable for round cable	yes
Suitable for flat cable	No
Suitable for litz wire conductor	yes
Suitable for solid core	yes
Housing material	Zinc die cast
Dust cover	yes
Complaint to UL94	V-0

This datasheet was created automatically on 18-11-2020 . Technical changes reserved.



DATASHEET

RJ45 Keystone STP, Cat.6, 250MHz

General data

For UAE suitable | No

Mechanical characteristics

Max. cable diameter	8.0 mm
Mating cycles	≥ 750
Contact coating	50 µ"

Environmental conditions

Temperature range | -40 – 66 °C

Electrical characteristics

Dielectric Withstanding Voltage	1000 V AC 60Hz
Current Rating	2 A
Insulation Resistance	≥ 500 MΩ
Contact Resistance	≤ 20 mΩ
4PPOE certified	yes

Available variants

Article no.	Title	Colour
E-20072	RJ45 Keystone STP, Cat.6, 250 MHz	silver

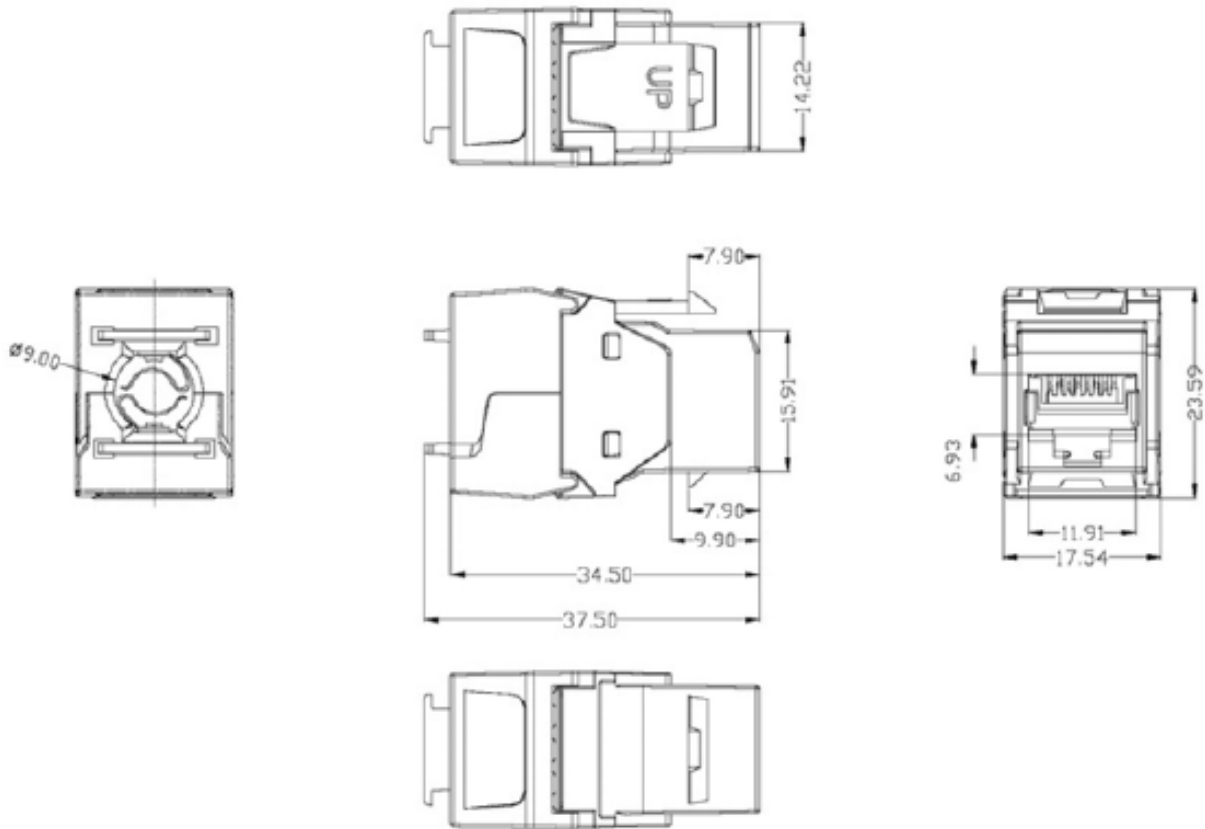
This datasheet was created automatically on 18-11-2020 . Technical changes reserved.



DATASHEET

RJ45 Keystone STP, Cat.6, 250MHz

Technical drawings



similar product

E-20091	RJ45 Keystone STP, Cat.6A, 500MHz, components certified, earthing
E-20070	RJ45 Keystone STP, Cat.6A, 500MHz, components certified

This datasheet was created automatically on 18-11-2020 . Technical changes reserved.

