





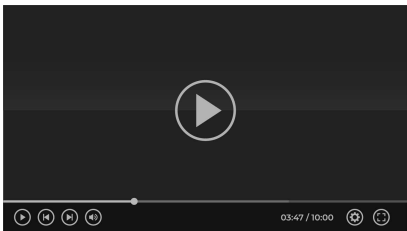
MAX540H190STR-HDSTR

 604 x 473 x H225 mm
23.78 x 18.62 x H8.86 inch.

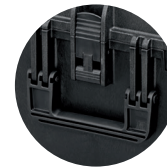
 538 x 405 x H190 mm
21.18 x 15.94 x H7.48 inch.

 50 + 140 mm
1.97 + 5.51 inch.

 VERSION S: 6,94 kg / 15.3 lb
VERSION HDS: 8,14 kg / 17.94 lb



HIGH DENSITY
CUBED FOAM
VIDEO



SIDE HANDLES
MANIGLIA LATERALE
SU ENTRAMBI I LATI



EXTENDABLE HANDLE
RETRO MANIGLIA
TELESCOPICA A
SCOMPARSA



- **WATERTIGHT SEAL AROUND LID** / GUARNIZIONE ERMETICA
- **AUTOMATIC PRESSURE RELEASE VALVE** / VALVOLA AUTOMATICA DI PRESSURIZZAZIONE
- **EASY TO OPEN DOUBLE THROW LATCHES** / CHIUSURE DI SICUREZZA A DOPPIO STEP
- **LOAD TESTED SOFT GRIP HANDLE** / MANICO MORBIDO AD ALTA ERGONOMICITÀ
- **STACKABLE INTERLOCKING SYSTEM** / SISTEMA DI IMPILABILITÀ
- **THICK BODY MATERIAL** / PARETI SPESSIE ANTIURTO
- **EXTRA FIXING POINTS** / PUNTI DI FISSAGGIO PER VARIE APPLICAZIONI
- **FULLY LENGTH HINGES** / CERNIERA LUNGO TUTTO IL PROFILO DELLA VALIGIA
- **NYLON PINS, CORROSION FREE** / PERNI IN NYLON ANTI CORROSIONE
- **SCREEN PRINTING AND RESIN LABEL SPACE** / SERIGRAFIA ED ETICHETTA RESINATA
- **MATERIAL: POLYPROPYLENE COPOLYMER** / MATERIALE: POLIPROPILENE COPOLIMERO
- **LATCHES: NYLON** / SERRATURE IN NYLON
- **O-RING: POLYMER** / GUARNIZIONE POLIMERO
- **TROLLEY: METAL + PLASTIC** / TROLLEY: METALLO + PLASTICA
- **WHEELS WITH STAINLESS STEEL PIN** / RUOTE CON ASSALE IN ACCIAIO INOX

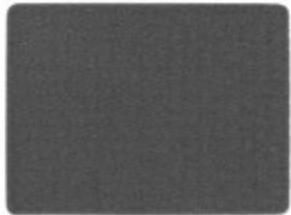
- **INTERNAL CUBIC VOLUME: 41399100 CUBIC MM - 1.462 CUBIC FEET** / VOLUME: 41399100 MM CUBI
- **VOLUME CAPACITY: 41,40 LT** / CAPACITÀ: 41,40 LT
- **PCS PER CARTON: 1** / PEZZI PER CARTONE: 1
- **WEIGHT OF THE FULL CARTON: 8.01 KG - 17.65 LBS.** / PESO DEL CARTONE: 8,01 KG
- **MOULDING: INJECTION MOLDED** / STAMPAGGIO: AD INIEZIONE
- **RANGE TEMPERATURE: -30 / 90°C (-22 / 194°F)** / RANGE DI TEMPERATURA: -30 / 90°C (-22 / 194°F)
- **ACCESSORIES: CUBED & CONVOLUTED FOAMS - LID ORGANIZER - BACKPACK** / SPUGNE CUBETTATE & SPUGNE BUGNATE - TASCA ORGANIZER - ZAINO

IP67 RATING

ATA 300

MIL SPECS

DEF STAN 81-41
STANAG 4280



Base foam

1 x 15 mm / 1 x 0.59 inch

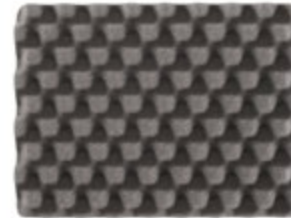
+



Cubed foam

2 x 60 mm / 2 x 2.36 inch

+



Convuluted foam

1 x 50 mm / 1 x 1.97 inch

=



MAX540H190STR



Base foam

1 x 15 mm / 1 x 0.59 inch

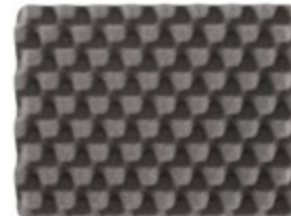
+



High Density Cubed foam

2 x 60 mm / 2 x 2.36 inch

+



Convuluted foam

1 x 50 mm / 1 x 1.97 inch

=



MAX540H190HDSTR