

VWM Series

vertical wall cabinets

the most vertical versatility

The VWM Series is the industry's highest capacity and most versatile low profile wall cabinet, with comprehensive flexibility to fit system needs today and as technology changes. This patent-pending design features multiple planes of vertical mounting, it allows deeper equipment to be mounted parallel to the wall and is the first low profile cabinet to offer intuitive mounting for small devices. VWM cabinets are ideal for small to medium networking, surveillance and monitoring, distributed audio and paging systems. Select one of our pre-configured models or tailor a VWM cabinet to order for the specific needs of the application at middleatlantic.com.

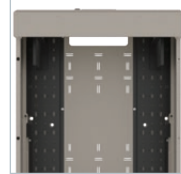


Maximizes space and expertly handles the highest density of components.



configurable platform

- Design to your specification at middleatlantic.com or choose a pre-configured model



flexible mounting

- Unique design allows mounting of rackrail where it's needed: left, center or right justified and multiple vertical positions
- Choose pivoting or fixed rackrail: with multiple RU options available, all rackrail features both 10-32 thread and cage nut
- Outfit the cabinet's backpan or door with Lever Lock™ to mount small devices



unique designs

- Available in 10" or 16" depth from the wall (up to 5 or 8RU) and 36" or 42" height along the wall (up to 31" or 37" useable depth)



systems approach

- Supports thermal management, cable integrity, power distribution and maximizing space while providing a secure location for components of all sizes in an all-in-one system



system security

- Split and solid door options accommodate electronic locks
- Integrators can determine the client's level of system access and visibility



safety certifications

- UL 2416 (NWIN)
- Certified with up to 150 lb. overall weight capacity
- Pivoting rackrail weight capacity: 20 lb.
- Door weight capacity: 30 lb.

what **great systems** are built on.™

A brand of **Legrand**

Middle Atlantic Products

WWM Series

the most vertical versatility

pre-configured

pre-configured models that meet your specific application



WWM-2-2-36K-PW



WWM-SD-8-36K-BW

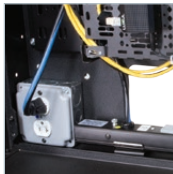


WWM-PD-4-36K-PW

pre-configured with



putty or black color



2-gang electrical box



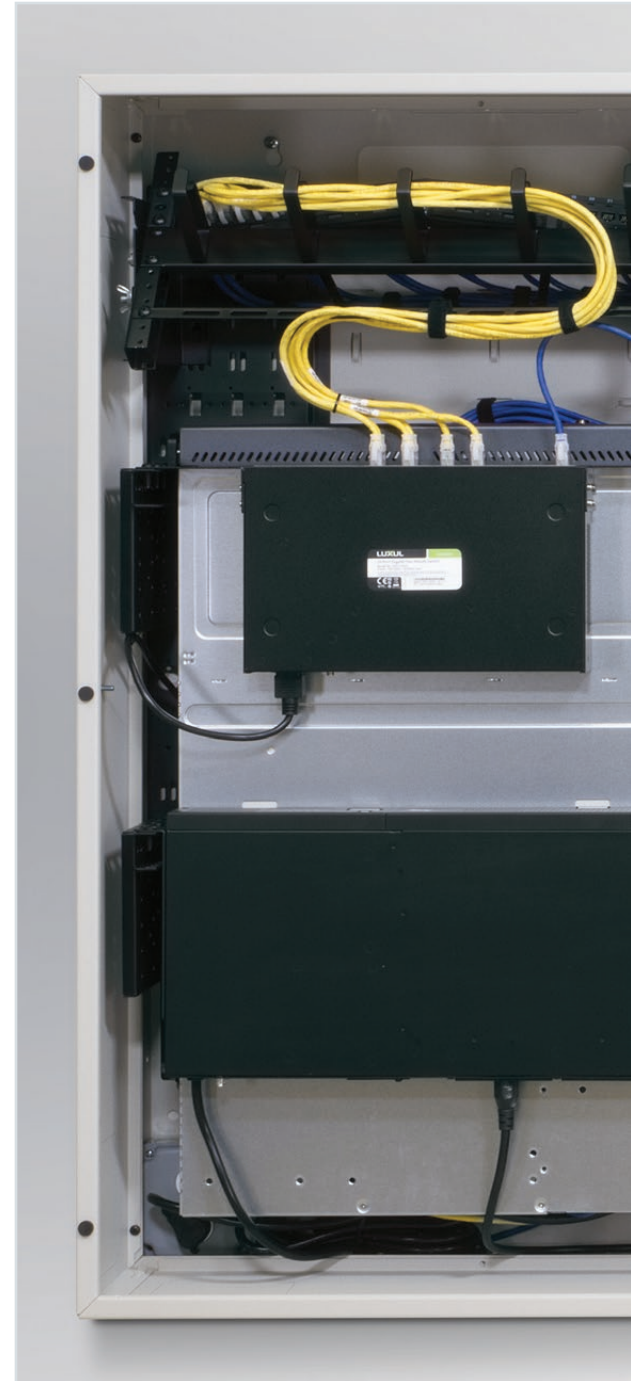
fixed or pivoting rackrail



split door with solid or plexiglass hinged top cover



or solid front door



Part #	Door	Rackrail Included	Height	Depth	Finish	Comparable To
WWM-2-2-36K-PW	Solid	2 pivot RU, 2 fixed RU	36"	12"	putty	HDR-4
WWM-4-5-36K-PW	Solid	4 pivot RU, 5 fixed RU	36"	12"	putty	HDR-9
WWM-4-5-42K-PW	Solid	4 pivot RU, 5 fixed RU	42"	12"	putty	HDR-9X
WWM-SD-4-36K-BW	Split, solid top	4 fixed RU	36"	12"	black	WRS-4
WWM-SD-6-36K-BW	Split, solid top	6 fixed RU	36"	18"	black	WRS-6
WWM-SD-8-36K-BW	Split, solid top	8 fixed RU	36"	18"	black	WRS-8
WWM-PD-4-36K-PW	Split, plexi top	4 fixed RU	36"	12"	putty	WRS-4
WWM-PD-6-36K-PW	Split, plexi top	6 fixed RU	36"	18"	putty	WRS-6
WWM-PD-8-36K-PW	Split, plexi top	8 fixed RU	36"	18"	putty	WRS-8

Design the VWM solution that fits your precise system needs at middleatlantic.com



or design the VWM Series



Size and Color Choices:

- 10" or 16" depth from the wall (up to 5 or 8 RU)
- 36" or 42" height along the wall (up to 31" or 37" useable depth)



Black



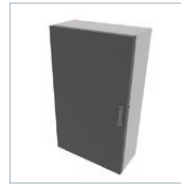
Putty



White

System Access Choices:

- Integrator-Only access with full door
- End-User access with split door. Features hinged top panel keyed separately from integrator access section
- Full access with no door



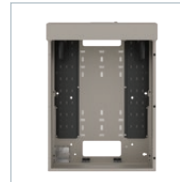
Full Door



Split Door Plexi Top (provides top access & visibility to user)



Split Door Solid top (provides top access to user)



No Door

Flexible Options & Accessories tailored to the system:

- Can be configured as you design the solution or purchased separately (see back)



Fixed Rackrail



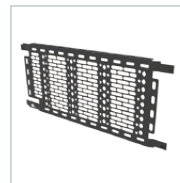
Pivoting Rackrail



Lever Lock™ Back Pan Kit



Lever Lock™ Front Door Kits



17" Vertical Lever Lock™ Accessories



Back Pan Brush Grommet

VWM Series

vertical wall cabinets



From small device mounting to brush grommets that enable wiring and patching to stay put when servicing and upgrading the system, VWM Series is the vertical wall cabinet that offers the precise configuration capability that evolving systems require.

accessories



choose from fixed position rackrail or pivoting rackrail featuring positive stop for punch downs



Lever Lock™ small device mounting accessories maximize space in the cabinet



back pan brush grommet enables easy system servicing

	Part #	Rail Type	Useable Rackspace	Mounting Configurations	Fits 10" Deep VWM	Fits 16" Deep VWM
Rackrail Options*	VWM-RR-2	fixed	2	horizontal vertical diagonal	X	X
	VWM-RR-4	fixed	4		X	X
	VWM-RR-5	fixed	5		X	X
	VWM-RR-6	fixed	6			X
	VWM-RR-8	fixed	8			X
	VWM-RR-PIV-2	pivoting	2	100°	X	X
	VWM-RR-PIV-4	pivoting	4		X	X

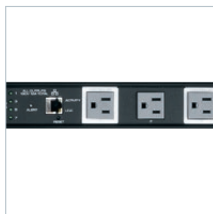
*all rackrail options feature both 10-32 thread and cage nut

	Part #	Description
Accessories	LL-VWM-BPK	Lever Lock™ backpan kit, includes 6" Lever Lock plate (LL-VP176-SWP)
	LL-VWM-36SP	Lever Lock™ front door kit fits 36" split door, includes 10" Lever Lock plate (LL-VP1710)
	LL-VWM-36S-42SP	Lever Lock™ front door kit fits 36" solid/42" split door, includes 10" Lever Lock plate (LL-VP1710)
	LL-VWM-42S	Lever Lock™ front door kit fits 42" solid door, includes 10" Lever Lock plate (LL-VP1710)
	LL-VP176-SWP	17" high 6" deep, vertical Lever Lock™ plate features structured wiring pattern
	VWM-6BR-BP	back pan brush grommet

complementary products



DC Power: PD-DC-45, PD-DC-125R



Select Series PDU with RackLink™: RLNK-1015V



17" Vertical Lever Lock™ Accessories: Plate, Channel, Angle & DIN Rail



Fan Kits: FAN2-DC; FAN2-DC-FC



Thermostatic Fan Control: FC-DC

corporate headquarters

300 Fairfield Road
Fairfield, NJ 07004, U.S.A.
Voice: 800-266-7225
Fax: 800-392-3955
International Voice: +1 973 839-1011
International Fax: +1 973 831-4982
middleatlantic.com

canada

113 Iber Road, Ottawa, Ontario K2S 1E7
Voice: 888-766-9770
Fax: 888-599-5009
middleatlantic.ca

factory distribution

USA: New Jersey · California · Illinois
Canada: Ontario

what great systems are built on.™

A brand of **legrand**

Middle Atlantic Products