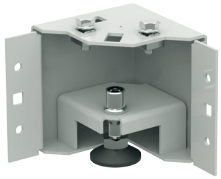


19" Network/Serverschränke PRO - Modular Plinth System: The Easy Way to the Required Plinth

Step 1: Choose Plinth Corners

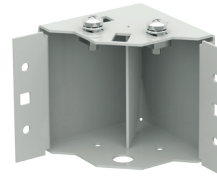


Art.-No. PRO-SOE100N.xx

- Plinth corners in height 100 mm or 200 mm
- Height adjustable (levelable)
- 4 pieces in set



Art.-No. PRO-SOE200N.xx



Art.-No. PRO-SOE100F.xx

- Plinth corners in height 100 mm or 200 mm
- Fixed height
- Suitable for fixing at the floor (e.g. dowel)
- Suitable for vibration protection
- 4 pieces in set



Art.-No. PRO-SOE200F.xx

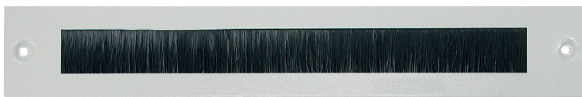
Step 2: Choose Side-Covers



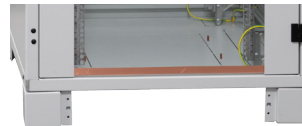
Plinth cover full (closed)



Plinth cover perforated



Plinth cover with brush



- Plinth covers are universally suitable for covering all sides of the plinth
- Plinth height 100 mm: 4 covers per plinth (with tilt protection: 3 corners)
200 mm: 8 covers per plinth (2 over each other)
- For use of tilt protection the front cover is omitted
- Mounting accessories included in delivers (screws, sleeves, etc.)

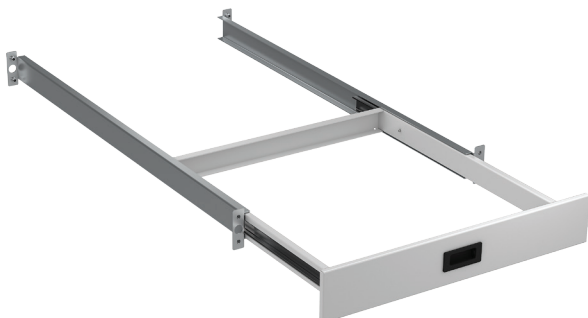
Art.-No. PRO-SOBxxV.GR - Plinth corner full (closed)

Art.-No. PRO-SOBxxP.GR - Plinth corner perforated

Art.-No. PRO-SOBxxB.GR - Plinth corner with brush

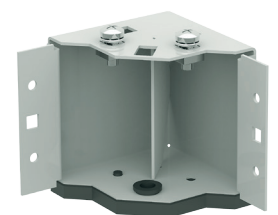
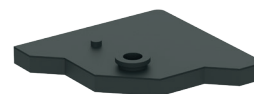
xx = (06 / 08 / 10 / 12 for 600 / 800 / 1000 / 1200 mm)

Step 3: Choose Further Accessories



- Slidable tilt protection for use with plinth corners
- Consisting of support frame and 2 guide rails
- The front plinth panel is omitted: plinth 100 mm - 3 covers required
plinth 200 mm - 7 covers required

Art.-No. PRO-KISxx.GR (xx = 06 / 08 for plinth width 600 mm / 800 mm)



- Vibration protection for use with plinth corners in fixed height
- It is recommended to additionally fix the plinth at the floor (e.g. with dowels)
- Set of 4 pieces

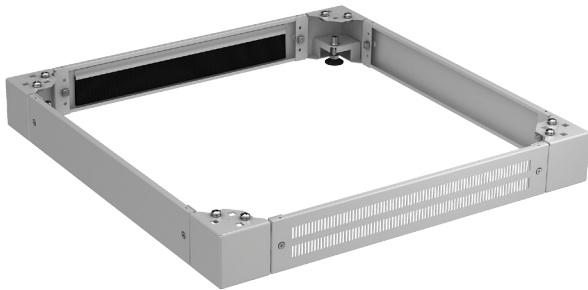
Art.-No. PRO-VIB01



Art.-Nr.	PRO-4288GR.G1SV	Datei	PRO-xx.indd		
Beschreibung	19" Netzwerk-/Serverschränke PRO				
Erstellt	Datum	Letzte Revision	Datum	Geprüft	Datum
MN	21.03.2018	MN	26.04.2019	MN	26.04.2019

19" Network-/Server Cabinets PRO - Modular Plinth System - Example Configuration

Example 1: plinth 800 x 800 mm, height 100 mm, levelable, front perforated, rear-sided cable entry with brush



- Plinth 800 x 800 mm, plinth height 100 mm, plinth corners levelable
- Front side perforated, rear-side with brush, left + right side closed
- Consisting of the following components:

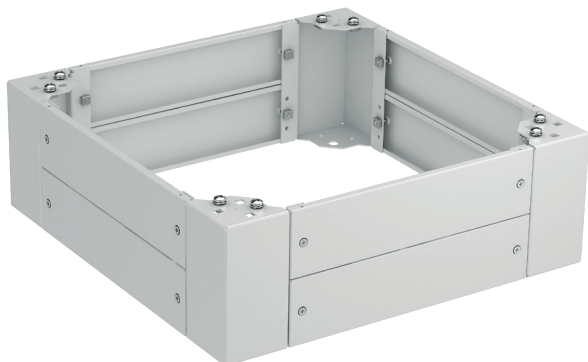
Description	Art.-No.	Qty
Plinth corner 100 mm, levelable	PRO-SOE100N.GR	4
Plinth cover, perforated	PRO-SOB08P.GR	1
Plinth cover, closed (full)	PRO-SOB08V.GR	2
Plinth cover, with brush	PRO-SOB08B.GR	1

- This plinth type is available as complete set with one Art.-No.:

RAL7035, Light Grey	Width 600 mm	Width 800 mm
Plinth 600 x 600 mm	PRO-SOK66PB.GR	PRO-SOK86PB.GR
Plinth 600 x 800 mm	PRO-SOK68PB.GR	PRO-SOK88PB.GR
Plinth 600 x 1000 mm	PRO-SOK60PB.GR	PRO-SOK80PB.GR
Plinth 600 x 1200 mm	PRO-SOK62PB.GR	PRO-SOK82PB.GR

RAL9005, Jet Black	Width 600 mm	Width 800 mm
Plinth 600 x 600 mm	PRO-SOK66PB.TS	PRO-SOK86PB.TS
Plinth 600 x 800 mm	PRO-SOK68PB.TS	PRO-SOK88PB.TS
Plinth 600 x 1000 mm	PRO-SOK60PB.TS	PRO-SOK80PB.TS
Plinth 600 x 1200 mm	PRO-SOK62PB.TS	PRO-SOK82PB.TS

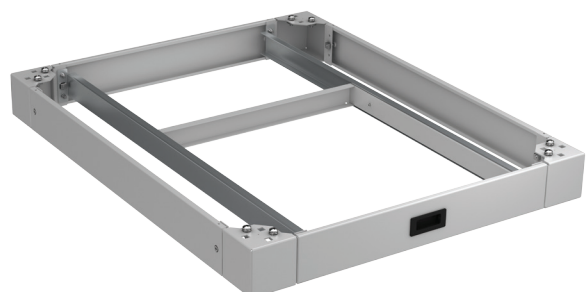
Example 2: plinth 600 x 600 mm, height 200 mm, all-sided closed



- Plinth 600 x 600 mm, plinth height 200 mm
- Plinth corners in fixed height
- All sides closed
- Consisting of the following components:

Description	Art.-No.	Qty
Plinth corner 200 mm, fix	PRO-SOE200F.GR	4
Plinth cover, closed (full)	PRO-SOB06V.GR	8

Beispiel 3: plinth 800 x 1000 mm, 100 mm, with tilt protection



- Plinth 800 x 1000 mm, plinth height 100 mm
- Plinth corners in fixed height
- All sides closed
- Consisting of the following components:

Description	Art.-No.	Qty
Plinth corner 100 mm, fix	PRO-SOE100F.GR	4
Plinth cover, closed (full)	PRO-SOB06V.GR	3
Tilt protection, sliding	PRO-KIS80.GR	1



Art.-Nr.	PRO-4288GR.G1SV	Datei	PRO-xx.indd		
Beschreibung	19" Netzwerk-/Serverschränke PRO				
Erstellt	Datum	Letzte Revision	Datum	Geprüft	Datum
MN	21.03.2018	MN	26.04.2019	MN	26.04.2019