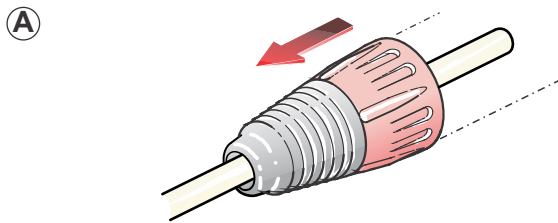


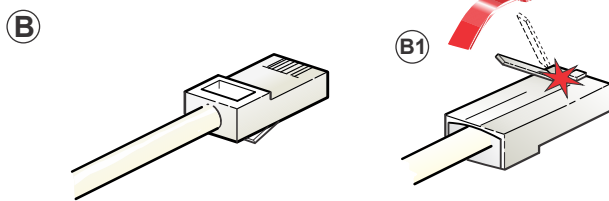


ASSEMBLY INSTRUCTION

etherCON | NE8MC-1, Ruggedized RJ 45
Data Connector with X Series bushing

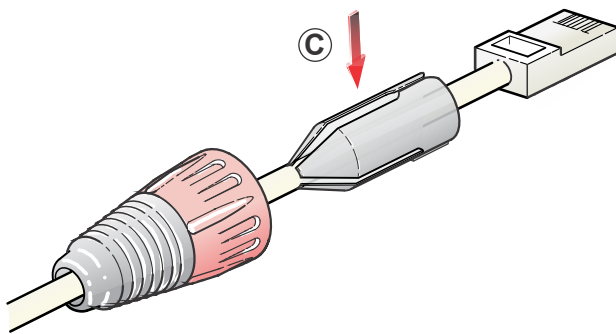


A Slide the bushing over the cable.



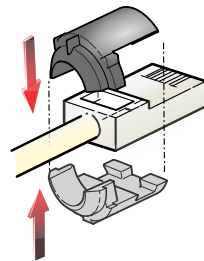
B Assemble the RJ45 plug on the cable.

B1 Cut off the release tab of RJ45 plug.



C Put the chuck onto the cable.

D1
STANDARD
VERSION

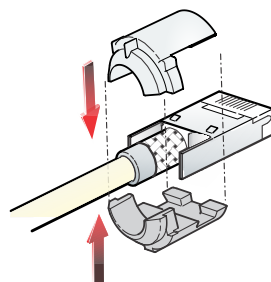


D1 Standard version:
Position the black & grey adapter onto
the connector.

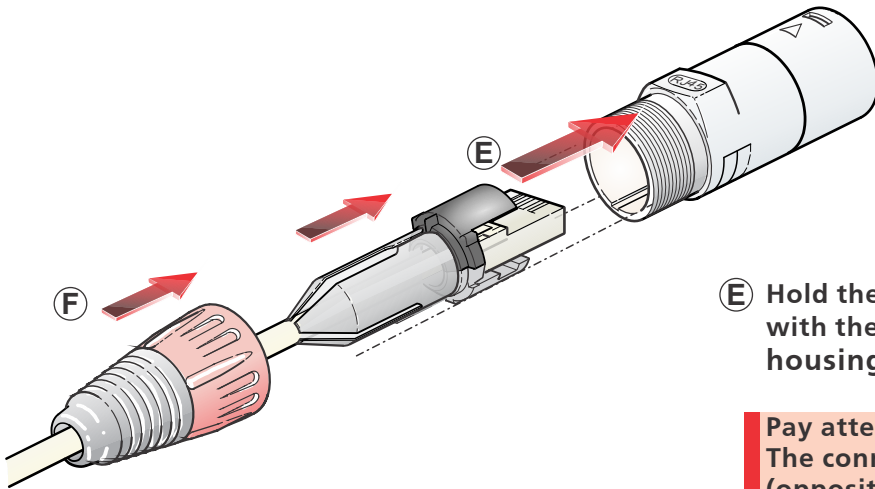
or

or

D2
SPECIAL
VERSION

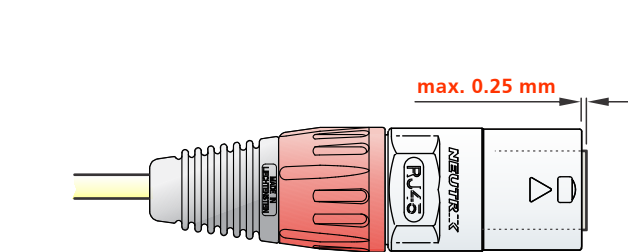


D2 Special version:
Position the white & grey adapter into
the port.



E Hold the assembly (RJ45 + adapters) in place with the chuck and slide it into the housing.

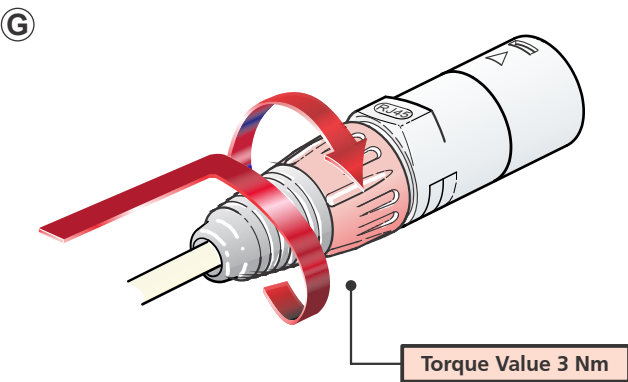
Pay attention:
The connector latch has to point downwards (opposite direction of RJ45 lettering)



F Slide the chuck in the housing (pay attention to the guiding key).

CAUTION:

max. 0.25 mm



G Slide the boot to the housing and tighten the bushing (max. torque 3 Nm).



Find more etherCON® details on www.neutrik.com.

NEUTRIK AG	LI	T: +423 / 237 24 24	F: +423/232 53 93	NEUTRIK France	FR	T: +33 1/4131 6750	F: +33 1/4131 0511
NEUTRIK USA Inc.	USA	T: +1 704 / 972 3050	F: +1 704/438 9202	NEUTRIK Tokyo Ltd.	JP	T: +81 3/3663 4733	F: +81 3/3663 4796
NEUTRIK (UK) Ltd.	UK	T: +44 1983 / 811 441	F: +44 1983/811 439	NEUTRIK Hong Kong Ltd.	HK	T: +852/2687 6055	F: +852/2687 6052
NEUTRIK Vertriebs GmbH	DE/NL/AT/DK	T: +49 8131 / 280 890	F: +49 8131/280 830	NEUTRIK India Pvt. Ltd.	IND	T: +91/982 05 43 424	F: +91/22 26163 540