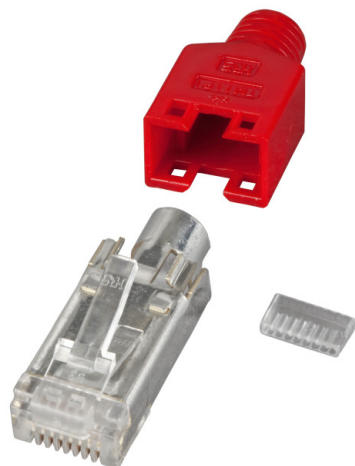


DATASHEET

RJ45 Hirose Connector Set STP, TM11 Cat.5e red



HRS HIROSE
ELECTRIC
GMBH

Cat.5E

Description

Up to 100 MHz (Cat.5e)
For stranded wires (AWG 24/7, AWG 26/7, AWG 27/7)
Shielded version
Core insulation about 0.9 - 1.0 mm
Cable diameter max. 5.8 mm
The set consists of RJ plug, anti-kink sleeve and guide plate
Suitable crimping tool DCW1002 + DCW1002.1 or 39934.2

General data

Category	5E
Model	jack (jack)
Connection type	crimp
Type of connector	RJ45 8(8)
Screened	True
AWG-range for litz wire conductor	24 - 27
Special tool necessary	True
Suitable for round cable	True
Suitable for flat cable	False
Suitable for litz wire conductor	True
Suitable for solid core	False

Available variants

Article no.	Title	Colour
H7540.6-10	RJ45-Hirose TM11 red 10 pcs.	red
H7540.6-50	RJ45-Hirose TM11 red 50 pcs.	red
H7540.6-100	RJ45-Hirose TM11 red 100 pcs.	red

This datasheet was created automatically on 18-11-2020 . Technical changes reserved.



DATASHEET



RJ45 Hirose Connector Set STP, TM11 Cat.5e red

accessory

37541.P

Hirose TM11 Guide plate

This datasheet was created automatically on 18-11-2020 . Technical changes reserved.



EFB-Elektronik GmbH
Striegauer Straße 1
33719 Bielefeld

fon: +49 521 40 41 8-0
fax: +49 521 40 41 8-50

info@efb-elektronik.de
www.efb-elektronik.de

WIR SORGEN FÜR VERBINDUNG
WE CARE FOR CONNECTION

