





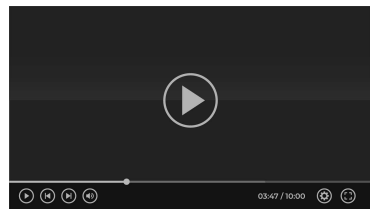
MAX540H245STR-HDSTR

 604 x 473 x H283 mm
23.78 x 18.62 x H11.14 inch.

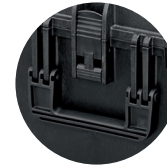
 538 x 405 x H245 mm
21.18 x 15.94 x H9.64 inch.

 50 + 195 mm
1.97 + 7.68 inch.

 VERSION S: 7,68 kg / 16.93 lb
VERSION HDS: 9,54 kg / 21.03 lb



HIGH DENSITY
CUBED FOAM
VIDEO



SIDE HANDLES
MANIGLIA LATERALE
SU ENTRAMBI I LATI



EXTENDABLE HANDLE
RETRO MANIGLIA
TELESCOPICA A
SCOMPARSA



- **WATERTIGHT SEAL AROUND LID** / GUARNIZIONE ERMETICA
- **AUTOMATIC PRESSURE RELEASE VALVE** / VALVOLA AUTOMATICA DI PRESSURIZZAZIONE
- **EASY TO OPEN DOUBLE THROW LATCHES** / CHIUSURE DI SICUREZZA A DOPPIO STEP
- **LOAD TESTED SOFT GRIP HANDLE** / MANICO MORBIDO AD ALTA ERGONOMICITÀ
- **STACKABLE INTERLOCKING SYSTEM** / SISTEMA DI IMPILABILITÀ
- **THICK BODY MATERIAL** / PARETI SPESSIE ANTIURTO
- **EXTRA FIXING POINTS** / PUNTI DI FISSAGGIO PER VARIE APPLICAZIONI
- **FULLY LENGTH HINGES** / CERNIERA LUNGO TUTTO IL PROFILO DELLA VALIGIA
- **NYLON PINS, CORROSION FREE** / PERNI IN NYLON ANTI CORROSIONE
- **SCREEN PRINTING AND RESIN LABEL SPACE** / SERIGRAFIA ED ETICHETTA RESINATA
- **MATERIAL: POLYPROPYLENE COPOLYMER** / MATERIALE: POLIPROPILENE COPOLIMERO
- **LATCHES: NYLON** / SERRATURE IN NYLON
- **O-RING: POLYMER** / GUARNIZIONE POLIMERO
- **TROLLEY: METAL + PLASTIC** / TROLLEY: METALLO + PLASTICA
- **WHEELS WITH STAINLESS STEEL PIN** / RUOTE CON ASSALE IN ACCIAIO INOX

- **INTERNAL CUBIC VOLUME: 53383050 CUBIC MM - 1.885 CUBIC FEET** / VOLUME: 53383050 MM CUBI
- **VOLUME CAPACITY: 53.38 LT** / CAPACITÀ: 53.38 LT
- **PCS PER CARTON: 1** / PEZZI PER CARTONE: 1
- **WEIGHT OF THE FULL CARTON: 8 KG - 17.64 LBS.** / PESO DEL CARTONE: 8 KG
- **MOULDING: INJECTION MOLDED** / STAMPAGGIO: AD INIEZIONE
- **RANGE TEMPERATURE: -30 / 90°C (-22 / 194°F)** / RANGE DI TEMPERATURA: -30 / 90°C (-22 / 194°F)
- **ACCESSORIES: CUBED & CONVOLUTED FOAMS - PADDED DIVIDERS - LID ORGANIZER - BACKPACK** / SPUGNE CUBETTATE & SPUGNE BUGNATE - DIVISORIE IMBOTTITE - TASCA ORGANIZER - ZAINO

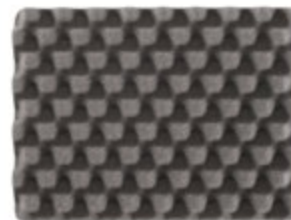
IP67 RATING **ATA 300** **MIL SPECS** DEF STAN 81-41
STANAG 4280



+



+



=



Base foam

1 x 15 mm / 1 x 0.59 inch

Cubed foam

3 x 60 mm / 3 x 2.36 inch

Convuluted foam

1 x 50 mm / 1 x 1.97 inch

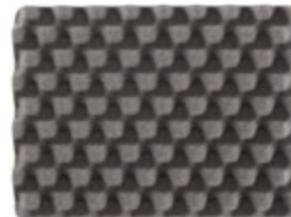
MAX540H245STR



+



+



=



Base foam

1 x 15 mm / 1 x 0.59 inch

High Density Cubed foam

3 x 60 mm / 3 x 2.36 inch

Convuluted foam

1 x 50 mm / 1 x 1.97 inch

MAX540H245HDSTR